



**QUESTION:** In the event of a **disaster**, you may be instructed to shut off the utility service at your home. Do you know how to turn off your main water valve? Your electricity? Your gas?



**QUOTE:** Should the Lord decide at this time to cleanse the Church -- and the need for that cleansing seems to be increasing -- a famine in this land of one year's duration could wipe out a large percentage of slothful members, including some ward and stake officers. Yet we cannot say we have not been warned. (*God, Family, Country, p. 383.*)

## Utility Shut-off and Safety

Below is some general guidance for shutting off utility service

### Water

Water quickly becomes a precious resource following many disasters. It is vital that all household members learn how to shut off the water at the main house valve.

- Cracked lines may pollute the water supply to your house. It is wise to shut off your water until you hear from authorities that it is safe for drinking.
- The effects of gravity may drain the water in your hot water heater and toilet tanks unless you trap it in your house by shutting off the main house valve (not the street valve in the cement box at the curb—this valve is extremely difficult to turn and requires a special tool).

### **Preparing to Shut Off Water**

- Locate the shut-off valve for the water line that enters your house. (only controls the water **INSIDE** your home) It may look like the sample pictured here.



- Make sure this valve can be completely shut off. Your valve may be rusted open, or it may only partially close. Replace it if necessary.
- Label this valve with a tag for easy identification, and make sure all household members know where it is located.

- The other MAIN water shut off valve can be found outside your home, usually on the sidewalk. It looks like the following:



You will need a crowbar or some other type of lever to open the lid.

This one will control the OUTSIDE and INSIDE of your home.

### **Other Type of Water Leaks:**

- \* If there is a leak under the sink, shut off valve coming out of wall.
- \* If your water heater is leaking from the bottom, shut off valve on water line on the right hand side of the wall.
- \* If your toilet is over flowing, stop using the water in your house and turn off the valve under the toilet.
- \* For major water leaks there should be a shut off valve in the garage, or in front of your house, or in the sidewalk in front of house.

## **Electricity**

Electrical sparks have the potential of igniting natural gas if it is leaking. It is wise to teach all responsible household members where and how to shut off the electricity.

### **Preparing to Shut Off Electricity**

- Locate your electricity circuit box.
- Teach all responsible household members how to shut off the electricity to the entire house.



**FOR YOUR SAFETY:** Always shut off all the individual circuits before shutting off the main circuit breaker.

## **Natural Gas**

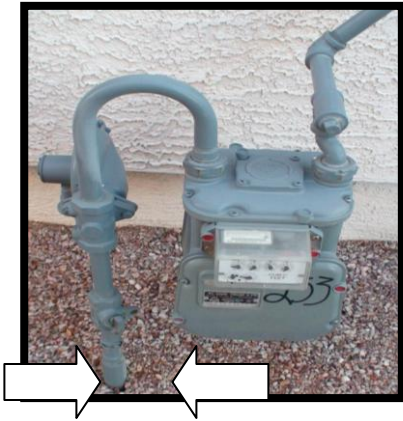
Natural gas leaks and explosions are responsible for a significant number of fires following disasters. It is vital that all household members know how to shut off natural gas.

Because there are different gas shut-off procedures for different gas meter configurations, it is important to contact your local gas company for guidance on preparation and response regarding gas appliances and gas service to your home.

When you learn the proper shut-off procedure for your meter, share the information with everyone in your household. Be sure not to actually turn off the gas when practicing the proper gas shut-off procedure.

If you smell gas or hear a blowing or hissing noise, open a window and get everyone out quickly. Turn off the gas, using the outside main valve if you can, and call the gas company from a neighbor's home.

Below is a picture of your GAS METER- the arrows are pointing to the part that you need a "wrench" to turn it off (Do you have one? Do you know where it is? Could you get to it fast?) :



**CAUTION -** If you turn off the gas for any reason, a qualified professional must turn it back on. NEVER attempt to turn the gas back on yourself.

**TIP : #1** If you are unsure if your water or gas is on or off here is a quick tip provided by a well known contractor (that would be my "Yes Man"- my husband):

"If your valve is inline (parallel) with the pipe- it is ON"

"If your valve makes a cross (perpendicular) with your pipe- it is OFF"

**#2** Keep a list of all emergency numbers in several places (on the refrigerator, near emergency shut-off valves, by your phones, and inside your 72 hour kits).

aussielloyd@cox.net  
 Lee Lloyd  
 "Food Storage Geek"

## Emergency Numbers for Las Vegas

**ALL Emergency (Police/Fire/Rescue) 911**

**EMERGENCY- Southwest Gas 1.800.447.5422**

**NON-EMERGENCY POLICE- 311**

Las Vegas	311 or 229.3111
Henderson	311 or 565.8933
North Las Vegas	311 or 633.9111
Mt. Charleston	1.800.492.6565
Boulder City	311 or 293.9224

**NON-EMERGENCY FIRE**

Clark County	455.7311
City of Las Vegas	383.2888

---

American Red Cross	791.3311	FEMA, Region IX	(510)627.7100
F.B.I	385.1281	Poison Control Center	(800)222.1222
Secret Witness	385.5555	Clark County Public Info.	455.3546
Clark County Disaster Information	223.INFO (4636)	Nevada Power	367.5555
City of Henderson Utility Service	267.5900	Southwest Gas	365.1111 (non) 1.800.447.5422 (Emergency)

#3 Great Website for Emergency Preparedness in NEVADA/Clark County

[http://www.co.clark.nv.us/Administrative\\_services/oem/default.htm](http://www.co.clark.nv.us/Administrative_services/oem/default.htm) or [www.accessclarkcounty.com](http://www.accessclarkcounty.com)